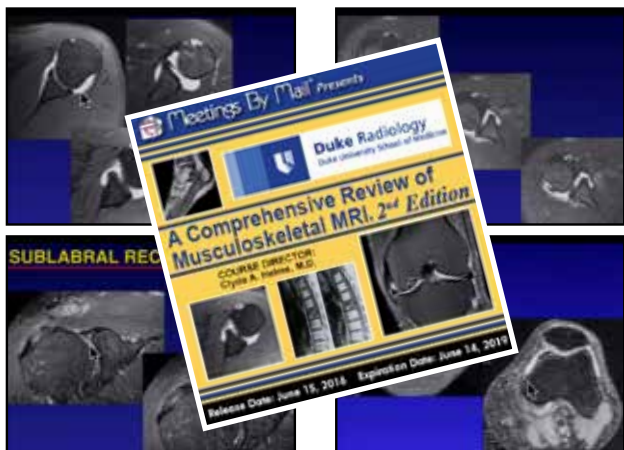


# Meet SA-CME Requirements for MOC



The second edition of A Comprehensive Review of Musculoskeletal MRI features Duke Radiology's Clyde Helms, M.D., providing a thorough analysis and update of imaging techniques relevant to all major musculoskeletal areas. With multiple hours of discourse and hundreds of images, this activity provides an excellent opportunity for radiologists to review current imaging procedures, while also integrating cutting edge innovations to the practice. **All 17.5 AMA PRA Category I Credits™ from this enduring material can be used to fulfill Self-Assessment CME requirements for Maintenance of Certification**, and all presentations are playable on mobile devices!

This outstanding CME activity features:

- 40 A/V presentations and panels concerning knee, shoulder, foot, ankle, hip, elbow, wrist, spine and bone marrow imaging!
- Available in DVD-ROM and **NEW! Online Streaming formats.**
- **Presentations in HD video, including speaker's cursor movements!**
- Simple navigation by topic, speaker or keyword search
- No CME processing fees

**Meetings By Mail**  
Bringing the symposium to the practice

# Order Form

Title	Sponsor	Credits <sup>1</sup>	Price	# Sets	Total \$
Comprehensive Review of MSK MRI 2nd Ed.	Duke	17.5	\$645		
Duke Cardiothoracic Imaging Plus	Duke	16	\$595		
Neuro & MSK Imaging	Duke	18.25	\$550		
25th Annual Duke Radiology Overview	Duke	19.5	\$595		
Abdominal, Thoracic & Pelvic Imaging	Duke	15.25	\$495		
SCBT-MR 38th Annual Course	SCBT-MR	32	\$645		
SCBT-MR 37th Annual Course	SCBT-MR	31	\$595		
SCBT-MR 36th Annual Course	SCBT-MR	27	\$550		
Duke Radiology Mammograms to MRI	Duke	16	\$645		
Breast MR 100 Case Review	MBM	15	\$595		
Breast Imaging Fundamentals & Innovations	Penn	16.5	\$695		
Breast Imaging 3 Course Combo (Save \$485)		47.5	\$1,450		
Oncologic Imaging	Penn	18	\$595		
Essentials of Body & MSK Imaging	Penn	16	\$495		
All 3 Penn Courses (Save \$490)	Penn	50.5	\$1295		
Nuclear Medicine & Molecular Imaging Update	MECSNMMI	15.25	\$595		
25 <sup>th</sup> Annual Advances in Vascular Imaging & Diagnosis	Cleveland Clinic	16.5	\$645		
Valve Disease & Diastology Summit	Cleveland Clinic	17.5	\$595		

<sup>1</sup> Each CME applicant must purchase a program

Sub Total ..... \$ \_\_\_\_\_  
 Quantity Discount % ..... \$ \_\_\_\_\_  
 Shipping/Handling (per set)  
 Domestic \$14.95 ..... \$ \_\_\_\_\_  
 NJ Residents please add 7% sales tax ..... \$ \_\_\_\_\_  
 Total Order ..... \$ \_\_\_\_\_

## Purchase Multiple Programs and SAVE!

2.... 10% Off! 3-5.....20% 6-9 ..... 30% 10+ .....40%

Place your order online at:  
[www.meetings-by-mail.com](http://www.meetings-by-mail.com)  
 Full Agendas and Online Demos Available

Name \_\_\_\_\_ Specialty \_\_\_\_\_  
(please print)

Address \_\_\_\_\_ Ph. # (\_\_\_\_) \_\_\_\_\_

City \_\_\_\_\_ State \_\_\_\_\_ Zip code \_\_\_\_\_

E-mail \_\_\_\_\_

Check      Amex      Visa      MC      Discover

A/C # \_\_\_\_\_

Exp Date: \_\_\_\_\_ Security Code: \_\_\_\_\_

Signature \_\_\_\_\_

Mail or Fax to: Meetings By Mail®  
 611 U.S. Highway 46 West, 4th Fl.  
 Hasbrouck Heights, NJ • 07604  
 Phone: (973) 989-0914  
 Fax: (201)-727-1529  
 E-Mail: sales@Meetings-By-Mail.com



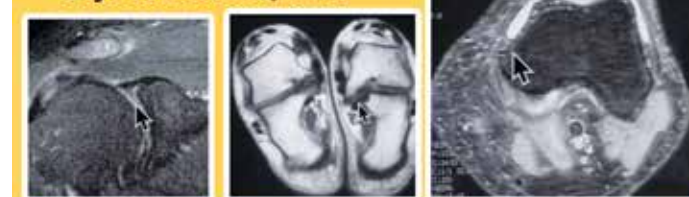
**DVD ROM** CME on DVD-ROM & Now **STREAMING ONLINE**

Meetings By Mail® Presents

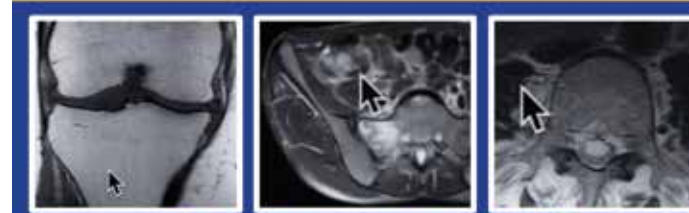


# A Comprehensive Review of Musculoskeletal MRI, 2<sup>nd</sup> Edition

COURSE DIRECTOR:  
 Clyde A. Helms, M.D.



Up to 17.5 AMA PRA Category I Credits™  
 All Credits Applicable Toward Self-Assessment CME Requirements for MOC.



[www.Meetings-By-Mail.com](http://www.Meetings-By-Mail.com)

Jointly provided by  
 Global Education Group and Meetings By Mail.

## Purpose Statement

The second edition of A Comprehensive Review of Musculoskeletal MRI features Duke Radiology's Clyde Helms, M.D., providing a thorough analysis and update of imaging techniques relevant to this continually developing subspecialty. Dr. Helms will focus upon the current status of imaging for the knee, shoulder, spine, foot and ankle. He is joined by James Vogler, III, M.D., who will discuss techniques for imaging the pelvis, hips, wrist, hand, elbow and bone marrow. Protocols and thorough analysis of each anatomic area will be presented. Featuring multiple hours of musculoskeletal MRI discourse and hundreds of images, this activity provides an excellent opportunity for radiologists to review current imaging procedures, while also integrating cutting edge innovations to the practice.

## Financial and Off-Label/Investigational Uses of Drugs/Medical Devices Disclosure Statement

This educational activity may contain discussion of published and/or investigational uses of products that are not indicated by the FDA. Global Education Group (Global) and Meetings by Mail do not recommend the use of any agent outside of the labeled indications.

The opinions expressed in the educational activity are those of the faculty and do not necessarily represent the views of any organization associated with this activity. Please refer to the official prescribing information for each product for discussion of approved indications, contraindications, and warnings.

## Educational Objectives

After completing this activity, the participant should be better able to:

1. Discuss the current musculoskeletal MR imaging procedures.
2. Design appropriate musculoskeletal imaging protocols.
3. Apply the current advances in musculoskeletal imaging to diagnosing disease processes in the elbow, knee, wrist, shoulder, spine, hip, foot and ankle.

## Accreditation and Designation

This activity has been planned and implemented in accordance with the accreditation requirements and policies of the Accreditation Council for Continuing Medical Education (ACCME) through the joint providership of Global Education Group (Global) and Meetings by Mail. Global is accredited by the ACCME to provide continuing medical education for physicians.

Global Education Group designates this enduring material for a maximum of 17.5 AMA PRA Category 1 Credits™. Physicians should claim only the credit commensurate with the extent of their participation in the activity.

All credits for this enduring material are applicable toward Self Assessment CME requirements for Maintenance of Certification (MOC).

There is a fee for this activity.

## Disclaimer

Participants have an implied responsibility to use the newly acquired information to enhance patient outcomes and their own professional development. The information presented in this activity is not meant to serve as a guideline for patient management. Any procedures, medications, or other courses of diagnosis or treatment discussed in this activity should not be used by clinicians without evaluation of patient conditions and possible contraindications on dangers in use, review of any applicable manufacturer's product information, and comparison with recommendations of other authorities.

**Course Director: Clyde A. Helms, MD**  
**Release date: June 15, 2016**  
**Expiration date: June 14, 2019**

## 17.5 AMA PRA Category I Credits™ includes imaging of the knee, shoulder, foot, ankle, hip, elbow, wrist, spine, bone marrow and much more!

### Session 1: Knee Anatomy, Protocols and Menisci

Anatomy & Protocols . . . . . Clyde A. Helms, MD  
 Menisci I: Tears . . . . .  
 Menisci II: Discoid, Cysts, Flips and Extrusions . . . . .

### Session 2: Knee Ligaments, Patella, Bursae & Cartilage

Cruciate Ligaments . . . . . Clyde A. Helms, MD  
 Collateral Ligaments . . . . .  
 Patella . . . . .  
 Bursae & Cartilage . . . . .

### Session 3: Pelvis and Hips

Osseous Abnormalities . . . . . James B. Vogler, III, MD  
 Tendon Abnormalities . . . . .  
 Labral Tears, Hip Plicae and FAI . . . . .  
 MRI of Hip Arthroplasties . . . . .  
 Q & A



**Available on  
 DVD-ROM and our  
 NEW Online  
 Streaming  
 Service!**

### Session 4: Shoulder I

Anatomy, Pathology and Protocols. . Clyde A. Helms, MD  
 Rotator Cuff Tears . . . . .

### Session 5: Shoulder II

Labrum: Glenohumeral Instability. . . Clyde A. Helms, MD  
 Normal Variants of the Shoulder. . . . .  
 Syndromes, Labral Tears and More . . . . .

### Session 6: MRI of the Wrist and Hand

Technique & Osseous Abnormalities . . . . . James B. Vogler, III, MD  
 Ligaments . . . . .  
 TFCC. . . . .  
 Tendons, Nerves and Masses . . . . .

### Session 7: Foot & Ankle I

Tendons I. . . . . Clyde A. Helms, MD  
 Tendons II . . . . .  
 Tendons III. . . . .

### Session 8: Foot & Ankle II

Ligaments . . . . . Clyde A. Helms, MD  
 Tumors and Masses . . . . .  
 Bony Abnormalities and Miscellany . . . . .  
 Osseous and Osteochondral Injuries . . . . .

### Session 9: Elbow

Ligament Injuries and Instability . James B. Vogler, III, MD  
 Muscle and Tendon Abnormalities . . . . .  
 Q & A. . . . .

### Session 10: Lumbar Spine

Protocols . . . . . Clyde A. Helms, MD  
 Disc Disease . . . . .  
 Disc Disease Mimics. . . . .  
 Spinal Stenosis, Spondylolysis and Spondylolisthesis . .  
 Q & A. . . . .

### Session 11: Tumors and Bone Marrow

Primary Bone and Soft Tissue Tumors . . . . . Clyde A. Helms, MD  
 Hemorrhage and Intra-articular Masses . . . . .  
 . . . . . Clyde A. Helms, MD  
 MR Imaging of Bone Marrow: Normal Patterns  
 and Abnormal Processes . . . . . James B. Vogler, III, MD  
 Q & A. . . . . Clyde A. Helms, MD

## Neuro, Breast, MSK, Body & More!

Interested in other topics?  
 Visit [www.Meetings-By-Mail.com](http://www.Meetings-By-Mail.com) to  
 see other Duke Radiology Courses  
 in Neuro, MSK, Cardiothoracic,  
 Breast and Body Imaging.  
 Combine courses for maximum savings!

